

fashion & film

FILM AND FASHION ARE SYNONYMOUS WITH EACH OTHER IN A WAY OF BEING A FORM OF EXPRESSION OF ART, CULTURE, AND A REFLECTION OF TIME.

Over the decades they have intertwined and influenced each other in many ways. While most movies reflect the fashion sense and scene of that time, there have been iconic films in which the characters have stood out and rather dictated how fashion should be, what people should be wearing.

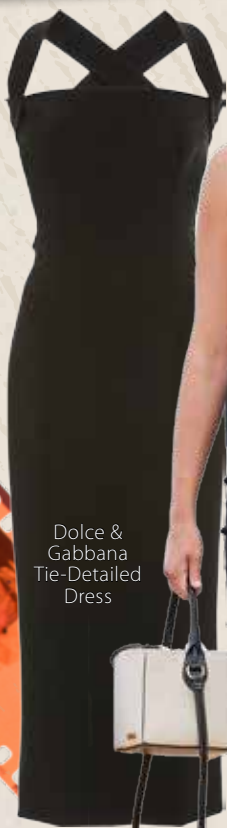
FROM THE VERY FAMOUS HOLLY GOLIGHTLY, CHER HOROWITZ TO THE LESSER-KNOWN ANNIE HALL HERE IS A TRIBUTE TO ALL TIMELESS STYLE ICONS AND THE WARDROBE STAPLE THEY FAMILIARISED.
BY SRUTHI RAVINDER



BREAKFAST AT TIFFANY'S

If you had anyone to thank for the LBD becoming a staple in a woman's closet it would be Audrey Hepburn in *Breakfast at Tiffany's*. One of the most iconic fashion characters to have ever played Holly Golightly – an eccentric socialite who has a fine taste in life – is a vision in a Hubert de

Givenchy black dress, kitten heels, Oliver Goldsmith sunglasses, massive stack of pearls, complete with velvet opera gloves and tiny tiara. It was this iconic look that familiarised the term classy dressing in the early 1960s and turned the little black dress into a classic we know of today.



Dolce & Gabbana Tie-Detailed Dress

JACQUEMUS



Gucci GG crystal hair clip

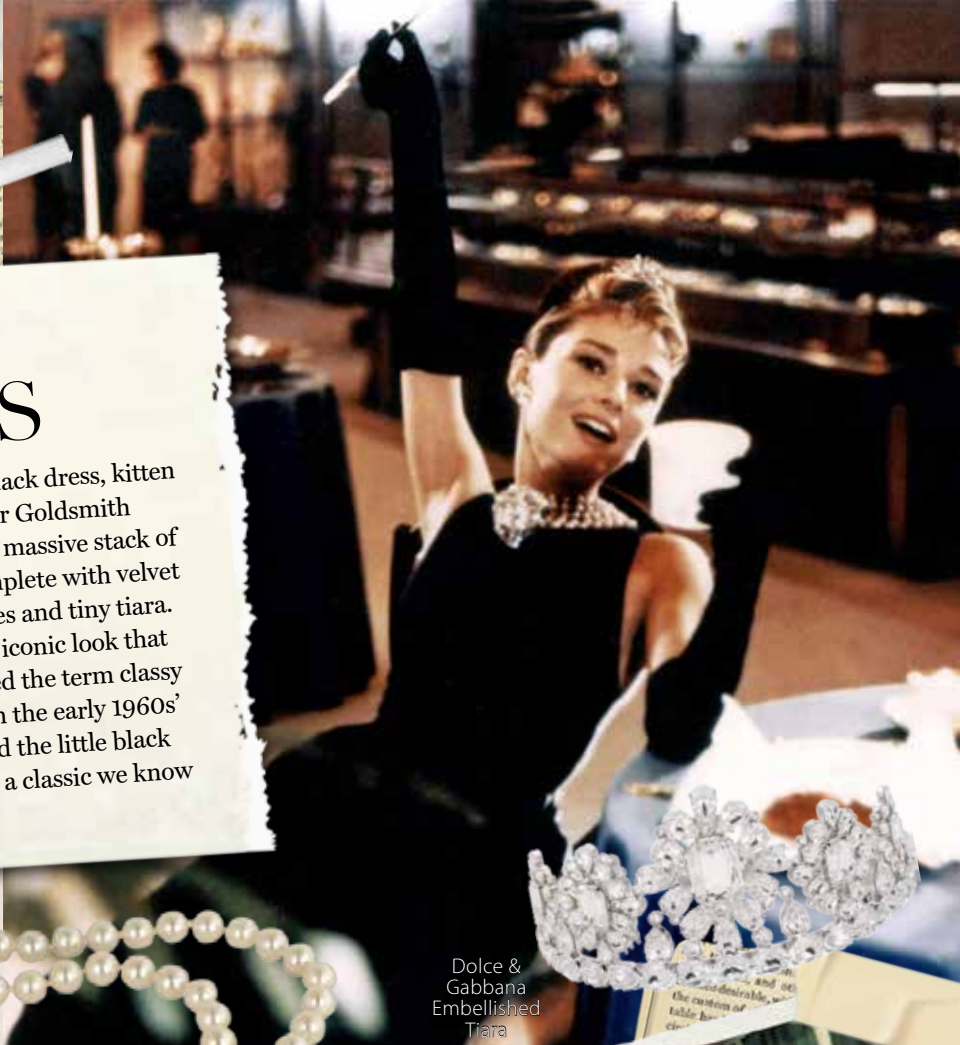


Dolce & Gabbana Embellished Tiara



Oliver Goldsmith Sunglasses

It was this iconic look that familiarised the term classy dressing in the early 1960s





SEX IN THE CITY

The Birkins, the Manolo Blahniks, thrift shop ballerina skirts, the Vivienne Westwood wedding dress – who hasn't wanted to be Carrie Bradshaw? A character with a personality that is just as iconic as her closet, Sex and The City did it big for fashion. Apart from Carrie, Samantha's suiting style and colour blocking is still a very on-trend street fashion statement.



Nili Lotan
lightweight
blazer

Delpozo
tulle midi skirt



Envelope1976
Pfeiffer Belted
Pleated Pants

Ambush
Pleated
Wide-Leg
Pants

Rag & Bone
Vanessa Pinstriped
Wool-Blend Vest

Gucci
Embroidered
Raffia Hat



ANNIE HALL

One of the earliest influences of gender-fluid dressing, Annie Hall introduced androgynous aesthetic way back in the 1970s'. Though the lead designer of the film was reportedly not a fan of the look she was putting together for Diane Keaton who played Annie, this

anti-heroine vibe is still a statement today. Baggy beige trousers, high-waist pants, over-sized jackets, vests, neckties, and floppy hats became an iconic style in the London and Paris fashion scene, inspiring more designers to introduce suits and casual power-dressing in women's wear.

PULP FICTION

'90s cult action film Pulp Fiction is said to have influenced almost a decade of the fashion runway. Lethal Lady Mia Wallace's (Uma Thurman) iconic look in a short black bob, white button-down shirt, cropped black pants complete with Chanel Pumps introduced minimalism into fashion's wardrobe. This incredibly simple look shifted the trends of an entire decade and even today a crisp white shirt is a wardrobe staple. Last year saw a return of cropped pants into the runway which is seemingly continuing as a trend in resort21 and SS2. The character of Mia also had a huge influence on the beauty industry, dark lipsticks became a major trend and Chanel's "Vamp" nail polish made its highest sale when the movie hit the big screen in 1994.

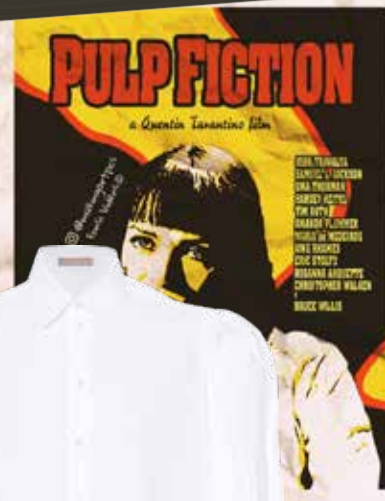


Chanel's "Vamp" nail polish made its highest sale when the movie hit the big screen in 1994.



Zadig&Voltaire Posh cropped trousers

Frame kick flare trousers



Alaïa Cotton shirt



Chanel Vam Nail Colour



Chanel Gold Leather CC Bow Ballet Flats



The then grunge
plaids were worn in
the most elegant way
in coordinators, suits,
blazers and skirts

Bottega
Veneta
plaid coat



Eugenia Kim
Cher Leather
Beret

Maison Michel
Abby Tweed
Beret

Roseanna
Elio Tradition plaid-
jacquard skirt

Nodaletto
Mary Jane
Leather Pumps



Chloé
Plaid Shorts



Forte Forte Plaid
Oversized Blazer

CLUELESS

When the movie was set to release in 1995, the then fashion moment was strongly grunge, all things opposite to what girls of Beverly Hills in Clueless would wear. However, Cher Horowitz (played by Alicia Silverstone) managed to change the

entire scene of 90s' fashion. With plaid co-ord sets, miniskirts, over-the-knee socks, and Mary Janes, Clueless didn't only dictate what fashion should look like in the 90s' but also went on to become a classic. ■

White patents, to silver metallic ones with thick, flat heels a pair of Mary Janes paired with over-the-knee socks is an essential Cher statement